



2023 PERFORMANCE

RXT[®]-X[®] 300

The ultimate off-shore performance watercraft.

KEY FEATURES

- Rotax[®] 1630 ACE™ – 300 engine
- ST3 Hull™
- Launch control
- iDF – Intelligent Debris-Free Pump System
- Ergolock two-piece racing seat
- Tilt steering
- Full-length angled footwell wedges
- X-sponsons
- Tech Package: BRP Audio – Premium System, full color 7.8" wide display and USB port



- Premium Triple Black
- Millennium Yellow

CAPACITY

| | |
|--------------------------|--------------------|
| Rider Capacity | 3 |
| Weight Capacity | 600 lb/272 kg |
| Fuel Capacity | 18.5 US gal/70 L |
| Glove Box | 0.8 US gal/2.9 L |
| Front Bin | 25.3 US gal/96 L |
| Storage Capacity – Total | 26.1 US gal/98.9 L |

DIMENSIONS

| | |
|---------------------------|-----------------|
| Length (bumper to bumper) | 135.9"/345.1 cm |
| Width | 49.4"/125.5 cm |
| Height | 45.2"/114.7 cm |

HULL

| | |
|----------|------------|
| Type | ST3 Hull™ |
| Material | Fiberglass |

OTHER FEATURES

- Seat strap
- iBR – Intelligent Brake & Reverse
- Extended VTS™ (Variable Trim System)
- RF D.E.S.S.™ key
- Watertight phone compartment
- LinQ[®] attachment system
- Knee pads
- Wide-angle mirrors
- Handle grips with palm rest
- Footwell carpets
- Large swim platform
- Ski tow eye

ROTAX[®] ENGINE

1630 ACE™ – 300

| | |
|-----------------|--|
| Horsepower | 300 hp |
| Intake System | Supercharged with external intercooler |
| Displacement | 1,630 cc |
| Cooling | Closed-Loop Cooling System (CLCS) |
| Reverse System | Electronic iBR [®] * |
| Fuel Type | 91 octane |
| Throttle System | iTC™ (Intelligent Throttle Control) |
| Exhaust System | D-Sea-Bel™ system |

GAUGE

| | | |
|-------------------|---------------------------------------|--------------------|
| Type of Gauge | Large panoramic 7.8" wide LCD display | |
| Main Functions | • BRP Connect | • Clock |
| | • Music | • VTS™ |
| iTC System – Mode | • Weather | • Fuel consumption |
| | • Bluetooth connectivity | • Fuel autonomy |
| | • Speedometer | • Speed statistics |
| | • RPM | • Vehicle hours |
| | • Sport mode | • Speed regulator |
| | • ECO [®] mode | • Launch control |
| | • Slow mode | |

WEIGHT

| | |
|------------|---------------|
| Dry Weight | 829 lb/376 kg |
|------------|---------------|

WARRANTY

BRP limited warranty covers the watercraft for one year.

*Electronic brake, neutral and reverse.





● Premium Triple Black



● Millennium Yellow

FEATURE HIGHLIGHTS



Ergolock™ System

A narrow seat profile with deep knee pockets lets riders sit naturally and use the lower body to hold onto the machine for more control.



BRP Audio – Premium System

The industry's first manufacturer-installed truly waterproof Bluetooth† audio system.



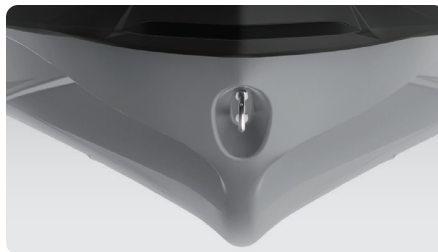
Full-Color 7.8" Wide Display

Full-color display with incredible visibility and a new level of functionality. Bluetooth† and smartphone app integration provides music, weather, navigation and more.



Rotax® 1630 ACE™ – 300 Engine

The Rotax 1630 ACE – 300 is the most powerful Rotax engine ever, delivering high efficiency and best-in-class acceleration.



ST3 Hull™

An innovative hull that sets the benchmark for rough water handling, stability and offshore performance.



iDF – Intelligent Debris-Free system

An innovative, industry-first system that allows you to free your pump of weeds and debris with intuitive handlebar-activated controls.