



2023 PERFORMANCE

RXP[®]-X[®] 300

Race-ready performance watercraft, reimagined.

KEY FEATURES

- Rotax[®] 1630 ACE[™] – 300 engine
- T3-R[™] hull
- Launch control
- Ergolock[™] R racing seat
- Low-rise racing handlebar
- Double-angled footwell wedges
- X-sponsons
- Tech Package: BRP Audio – Premium System and full-color 7.8" wide display (optional)



- Premium Triple Black
- Millennium Yellow

CAPACITY

| | |
|--------------------------|---------------------|
| Rider Capacity | 2 |
| Weight Capacity | 400 lb/182 kg |
| Fuel Capacity | 18.5 US gal/70 L |
| Glove Box | 2.56 US gal/9.7 L |
| Front Bin | 37,78 US gal/143 L |
| Storage Capacity – Total | 40.6 US gal/153.7 L |

DIMENSIONS

| | |
|---------------------------|-----------------|
| Length (bumper to bumper) | 130.6"/331.8 cm |
| Width | 49.2"/125 cm |
| Height | 44"/111 cm |

HULL

| | |
|----------|------------------------|
| Type | T3-R Hull [™] |
| Material | Fiberglass |

OTHER FEATURES

- iBR – Intelligent Brake & Reverse
- Extended VTS[™] (Variable Trim System)
- RF D.E.S.S.[™] key
- Watertight phone compartment
- LinQ[®] attachment system
- Wide-angle mirrors
- Round handle grips
- Footwell carpets
- Large swim platform
- Ski tow eye

ROTAX[®] ENGINE

1630 ACE[™] – 300

| | |
|-----------------|---|
| Horsepower | 300 hp |
| Intake System | Supercharged with external intercooler |
| Displacement | 1,630 cc |
| Cooling | Closed-Loop Cooling System (CLCS) |
| Reverse System | Electronic iBR [®] * |
| Fuel Type | 91 octane |
| Throttle System | iTC [™] (Intelligent Throttle Control) |
| Exhaust System | D-Sea-Bel [™] system |

GAUGE

| | |
|-------------------|---|
| Type of Gauge | Large panoramic 7.8" wide LCD display (w/audio) 7.6" wide digital display (w/o audio) |
| Main Functions | <ul style="list-style-type: none"> • BRP Connect (opt.) • Music (opt.) • Weather (opt.) • Bluetooth connectivity (opt.) • Speedometer • RPM • Clock • VTS[™] • Fuel consumption (opt. w/ audio) • Fuel autonomy • Speed statistics • Vehicle hours |
| iTC System – Mode | <ul style="list-style-type: none"> • Sport mode • ECO[®] mode • Slow mode • Speed regulator • Launch control |

WEIGHT

| | |
|------------|---------------|
| Dry Weight | 780 lb/354 kg |
|------------|---------------|

WARRANTY

BRP limited warranty covers the watercraft for one year.

*Electronic brake, neutral and reverse.





● Premium Triple Black



● Millennium Yellow

FEATURE HIGHLIGHTS



Ergolock™ R System

A narrow seat profile with deep knee pockets and a revolutionary adjustable saddle that allows riders to lock in to the machine like never before.



BRP Audio – Premium System (Optional)

The industry's first manufacturer-installed truly waterproof Bluetooth† audio system.



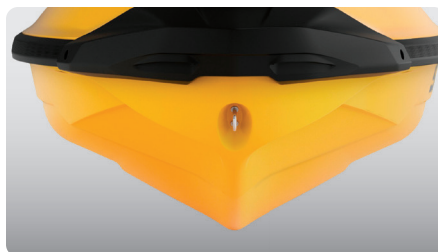
Full-Color 7.8" Wide Display (Optional)

Full-color display with incredible visibility and a new level of functionality. Bluetooth and smartphone app integration provides music, weather, navigation and more.



Rotax® 1630 ACE™ – 300 Engine

The Rotax 1630 ACE – 300 is the most powerful Rotax engine ever, delivering high efficiency and best-in-class acceleration.



T3-R Hull™

A deep-V design that offers unrivaled handling and acceleration and a new level of control at high speed.



Large Front Storage

An impressive 38 gallons of sealed storage space allows riders to safely stow belongings while riding.

©2022 Bombardier Recreational Products Inc., (BRP). All rights reserved. ®, TM and the BRP logo are trademarks of Bombardier Recreational Products Inc. or its affiliates. Products are distributed in the USA by BRP US Inc. All product comparisons, industry and market claims refer to new sit-down PWC with 4-stroke engines. Watercraft performance may vary depending on, among other things, general conditions, ambient temperature, altitude, riding ability and rider/passenger weight. Testing of competitive models done under identical conditions. Because of our ongoing commitment to product quality and innovation, BRP reserves the right at any time to discontinue or change specifications, price, design, features, models or equipment without incurring any obligation. †Bluetooth is a registered trademark owned by Bluetooth SIG, Inc. and any use of such trademarks by BRP is under license. Printed in Canada.