



2023 SPORT FISHING

# FISHPRO™ TROPHY 170

The most advanced sport fishing personal watercraft on the water.

## KEY FEATURES

- Rotax® 1630 ACE™ – 170
- ST3 Hull™
- iDF – Intelligent Debris-Free Pump System
- Garmin® 7" touchscreen GPS & fish finder
- Advanced battery system
- Modular swivel seat
- Rear Deck Extension with LinQ
- Quick-connect livewell
- LinQ fishing cooler (13.5 US gal/51 L)
- Anchoring system
- Tech Package: BRP Audio – Premium System, full color 7.8" wide display and USB port



Shark Grey & Orange Crush

## CAPACITY

Rider Capacity	3
Weight Capacity	600 lb/272 kg
Rear Platform Capacity (without passenger)	221 lb/100 kg
Fuel Capacity	18.5 US gal/70 L
Glove Box	0.8 US gal/2.9 L
Front Bin	25.3 US gal/96 L
LinQ Fishing Cooler	13.5 US gal/51 L
Storage Capacity – Total	39.6 US gal/149.9 L

## DIMENSIONS

Length (bumper to bumper)	146.8"/373 cm
Width	49.4"/125 cm
Height (pedestal seat uninstalled)	45.3"/115 cm

## HULL

Type	ST3 Hull™
Material	Fiberglass

## OTHER FEATURES

- Seat strap
- iBR – Intelligent Brake & Reverse
- VTS™ – Variable Trim System
- Boarding ladder
- RF D.E.S.S.™ key\*\*
- Direct-access front storage
- Storage bin organizer
- Watertight phone compartment
- Two sets of LinQ attachment points
- Wide-angle mirrors
- Handle grips with palm rest
- Footwell carpets
- Large swim platform
- 5 fishing rod holders
- Angled gunwale footrests
- 2 LinQ front supports
- Cup holder
- USB port
- Tilt steering
- Ski tow eye

## ROTAX® ENGINE

1630 ACE™ – 170

Horsepower	170 hp
Intake System	Naturally aspirated
Displacement	1,630 cc
Cooling	Closed-Loop Cooling System (CLCS)
Reverse System	Electronic iBR**
Fuel Type	87 octane
Throttle System	iTC™ (Intelligent Throttle Control)
Exhaust System	D-Sea-Bel™ system

## GAUGE

Type of Gauge	Large panoramic 7.8" wide LCD display	
Main Functions	• BRP Connect	• Clock
	• Music	• VTS™
iTC System – Mode	• Weather	• Fuel consumption
	• Bluetooth® connectivity	• Fuel autonomy
	• Speedometer	• Water temperature
	• RPM	• Speed statistics
WEIGHT	• Sport mode	• Trolling mode (slow mode)
	• ECO® mode	• Speed regulator
	• WARRANTY	

## WEIGHT

Dry Weight	898 lb/407 kg
------------	---------------

## WARRANTY

BRP limited warranty covers the watercraft for one year.

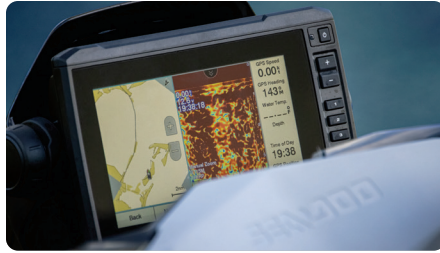
\*Electronic brake, neutral and reverse. \*\*May not be available at time of purchase. Please check with your dealer.



## FEATURE HIGHLIGHTS



**Modular Swivel Seat**  
Installs in seconds for a game-changing experience. Both the pedestal and backrest stow cleverly away when not in use.



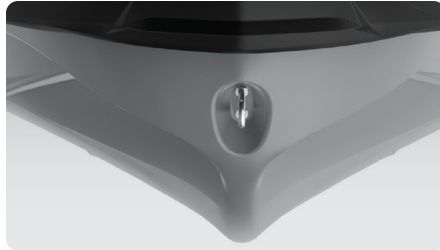
**Garmin® 7" Touchscreen GPS & Fish Finder**  
The Garmin 7" touchscreen fish-finder and GPS features an in-hull transducer and mid-CHIRP sonar. Includes token for access to free upgraded regional maps.



**Quick-Connect Livewell**  
Turn the LinQ Fishing Cooler into a livewell in seconds. An integrated pump constantly feeds fresh water into the reservoir keeping your catch or your bait alive all day.



**Rotax® 1630 ACE™ – 170 Engine**  
The Rotax® 1630 ACE™ – 170 combines plenty of naturally aspirated power and economy, meaning the adventure can be exhilarating and prolonged.



**ST3 Hull™**  
An innovative hull that sets the benchmark for rough water handling, stability, and offshore performance.



**Full-Color 7.8" Wide Display**  
Full-color display with incredible visibility and a new level of functionality. Bluetooth® and smartphone app integration provides music, weather, navigation and more.

©2022 Bombardier Recreational Products Inc., (BRP). All rights reserved. ®, TM and the BRP logo are trademarks of Bombardier Recreational Products Inc. or its affiliates. Products are distributed in the USA by BRP US Inc. All product comparisons, industry and market claims refer to new sit-down PWC with 4-stroke engines. Watercraft performance may vary depending on, among other things, general conditions, ambient temperature, altitude, riding ability and rider/passenger weight. Testing of competitive models done under identical conditions. Because of our ongoing commitment to product quality and innovation, BRP reserves the right at any time to discontinue or change specifications, price, design, features, models or equipment without incurring any obligation. †Garmin is a trademark of Garmin Ltd. or its subsidiaries. †Bluetooth is a registered trademark owned by Bluetooth SIG, Inc. and any use of such trademarks by BRP is under license. Printed in Canada.