



2023 ADVENTURE

NEW

# EXPLORER PRO® 170

The ultimate companion for any adventure.

## KEY FEATURES

- Rotax® 1630 ACE™ – 170
- ST3 Hull™
- Tech Package: BRP Audio – Premium System, full color 7.8" wide display and USB port (optional)
- iDF – Intelligent Debris-Free Pump System
- Garmin® 7" touchscreen GPS & fish finder
- Touring windshield
- Heavy duty front bumper
- Adjustable handlebar riser
- Explorer touring seat and knee pads
- Gunwale footrests
- LinQ® Multi Cargo Rack
- Rear Deck Extension with second LinQ attachment system
- LinQ Explorer Bag



● NEW Iceland Grey

## CAPACITY

Rider Capacity	3
Weight Capacity	600 lb/272 kg
Rear Platform Capacity (without passenger)	221 lb/100 kg
Fuel Capacity	18.5 US gal/70 L
Glove Box	0.8 US gal/2.9 L
Front Bin	25.3 US gal/96 L
LinQ Explorer Bag	26.4 US gal/100 L
Storage Capacity – Total	52.3 US gal/198.9 L

## DIMENSIONS

Length (bumper to bumper)	146.8"/373.4 cm
Width	49.4"/125.5 cm
Height	55.5"/140 cm

## HULL

Type	ST3 Hull™
Material	Fiberglass

## OTHER FEATURES

- Seat strap
- iBR – Intelligent Brake & Reverse
- VTS™ (Variable Trim System)
- Boarding ladder
- RF D.E.S.S.™ key\*\*
- Direct-access front storage
- Watertight phone compartment
- LinQ attachment system
- Knee pads
- Wide-angle mirrors
- Handle grips with palm rest
- Footwell carpets
- Large swim platform
- Angled gunwale footrests
- 1 LinQ front support
- Cup holder
- Tilt steering
- Ski tow eye

## ROTAX® ENGINE

1630 ACE™ – 170

Horsepower	170 hp
Intake System	Naturally aspirated
Displacement	1,630 cc
Cooling	Closed-Loop Cooling System (CLCS)
Reverse System	Electronic iBR**
Fuel Type	87 octane
Throttle System	iTC™ (Intelligent Throttle Control)
Exhaust System	D-Sea-Bel™ system

## GAUGE

Type of Gauge	Large panoramic 7.8" wide LCD display (w/ audio) 7.6" wide digital display (w/o audio)
Main Functions	<ul style="list-style-type: none"> <li>• BRP Connect (opt.)</li> <li>• Music (opt.)</li> <li>• Weather (opt.)</li> <li>• Bluetooth connectability (opt.)</li> <li>• Speedometer</li> <li>• RPM</li> <li>• Clock</li> <li>• VTS™</li> <li>• Fuel consumption (opt.)</li> <li>• Fuel autonomy</li> <li>• Water temperature</li> <li>• Speed statistics (opt.)</li> <li>• Vehicle hours</li> </ul>
iTC System – Mode	<ul style="list-style-type: none"> <li>• Sport mode</li> <li>• ECO® mode</li> <li>• Slow mode</li> <li>• Speed regulator</li> </ul>

## WEIGHT

Dry Weight	859 lb/390 kg
------------	---------------

## WARRANTY

BRP limited warranty covers the watercraft for one year.

\*Electronic brake, neutral and reverse.  
\*\*May not be available at time of purchase. Please check with your dealer.



## FEATURE HIGHLIGHTS



### Touring Windshield

An industry-first that reduces fatigue and noise associated with prolonged wind pressure whilst also protecting against splashing and salt water exposure when riding offshore.



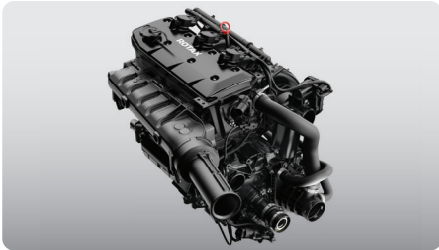
### Extended Riding Comfort

With extended riding duration in mind, the new Explorer Touring seat and knee pads, adjustable riser handlebars and gunwale footrests provide ultimate extended riding comfort.



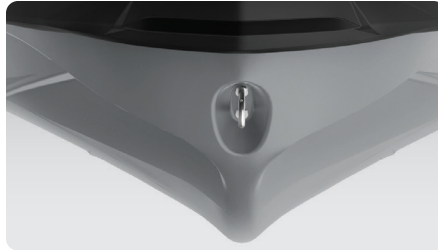
### LinQ Explorer Bag

Keep extra gear dry and easily accessible with this 100L (26.4 gallon) bag. This exclusive LinQ compatible accessory is waterproof, functional and portable. It can be stacked on the LinQ plate/LinQ accessories or carried as a backpack.



### Rotax® 1630 ACE™ – 170 Engine

The Rotax® 1630 ACE™ – 170 combines plenty of naturally aspirated power and economy, meaning the adventure can be exhilarating and prolonged.



### ST3 Hull™

An innovative hull that sets the benchmark for rough water handling, stability, and offshore performance.



### Rear Deck Extension with second LinQ attachment system

Adds 11.5 inches to the back of the watercraft to increase stability, space, and storage capability.