

WAKE™ PRO 230

Stability, power and music to tow like a pro.

KEY FEATURES

- Rotax® 1630 ACE™ – 230
- ST3 Hull™
- Tech Package: BRP Audio – Premium System, full color 7.8" wide display and USB port
- iDF – Intelligent Debris-Free Pump System
- iBR® – Intelligent Brake & Reverse
- Watertight phone compartment
- Direct-access front storage
- Boarding ladder
- Wake Package: LinQ® retractable ski pylon, speed-based ski mode, removable wakeboard rack, Wake graphics



● Neo Mint

CAPACITY

| | |
|--------------------------|--------------------|
| Rider Capacity | 👤👤👤 |
| Weight Capacity | 600 lb/272 kg |
| Fuel Capacity | 18.5 US gal/70 L |
| Glove Box | 0.8 US gal/2.9 L |
| Front Bin | 25.3 US gal/96 L |
| Storage Capacity – Total | 26.1 US gal/98.9 L |

DIMENSIONS

| | |
|---------------------------|---------------------------|
| Length (bumper to bumper) | 135.9"/345.1 cm |
| Width | 49.4"/125.5 cm (w/o rack) |
| Height | 44.8"/114 cm |

HULL

| | |
|----------|------------|
| Type | ST3 Hull™ |
| Material | Fiberglass |

OTHER FEATURES

- Ergolock™ two-piece seat
- Seat strap
- VTS™ – Variable Trim System
- RF D.E.S.S.™ key**
- LinQ attachment system
- Wide-angle mirrors
- Handgrip with palm rests
- Footwell carpets
- Large swim platform with carpet
- Tilt steering
- Ski tow eye

ROTAX® ENGINE

1630 ACE™ – 230

| | |
|-----------------|--|
| Intake System | Supercharged with external intercooler |
| Displacement | 1,630 cc |
| Cooling | Closed-Loop Cooling System (CLCS) |
| Reverse System | Electronic iBR®* |
| Fuel Type | 95 Octane |
| Throttle System | iTC™ (Intelligent Throttle Control) |
| Exhaust System | D-Sea-Bel™ system |

GAUGE

| | | |
|-------------------|---------------------------------------|---------------------|
| Type of Gauge | Large panoramic 7.8" wide LCD display | |
| Main Functions | • BRP Connect | • Clock |
| | • Music | • VTS™ |
| iTC System – Mode | • Weather | • Fuel consumption |
| | • Bluetooth† connectivity | • Fuel autonomy |
| | • Speedometer | • Water temperature |
| | • RPM | • Vehicle hours |
| iTC System – Mode | • Sport mode | • Speed regulator |
| | • ECO® mode | • Ski mode |
| | • Slow mode | |

WEIGHT

| | |
|------------|---------------|
| Dry Weight | 816 lb/370 kg |
|------------|---------------|

WARRANTY

BRP limited warranty covers the watercraft for one 2 years.

*Electronic brake, neutral and reverse. **May not be available at time of purchase. Please check with your dealer.

FEATURE HIGHLIGHTS



Full-Color 7.8" Wide Display

Full-color display with incredible visibility and a new level of functionality. Bluetooth and smartphone app integration provides music, weather, navigation and more.



LinQ Retractable Ski Pylon

A quick-install retractable ski pylon that stows away when not in use. Features spotter handgrips and rope storage.



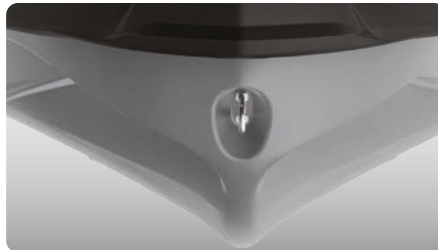
Wakeboard Rack

Provides convenient storage and transport of a wakeboard.¹



Rotax® 1630 ACE™ – 230 Engine

This powerful engine comes standard with a supercharger and external intercooler. It is optimized to run on regular fuel, which lowers fuel costs.



ST3 Hull™

An innovative hull that sets the benchmark for rough water handling, stability and offshore performance.



BRP Audio – Premium System

An industry-first manufacturer-installed, truly waterproof, Bluetooth[†] audio system.

¹ Wakeboard and rope not included.